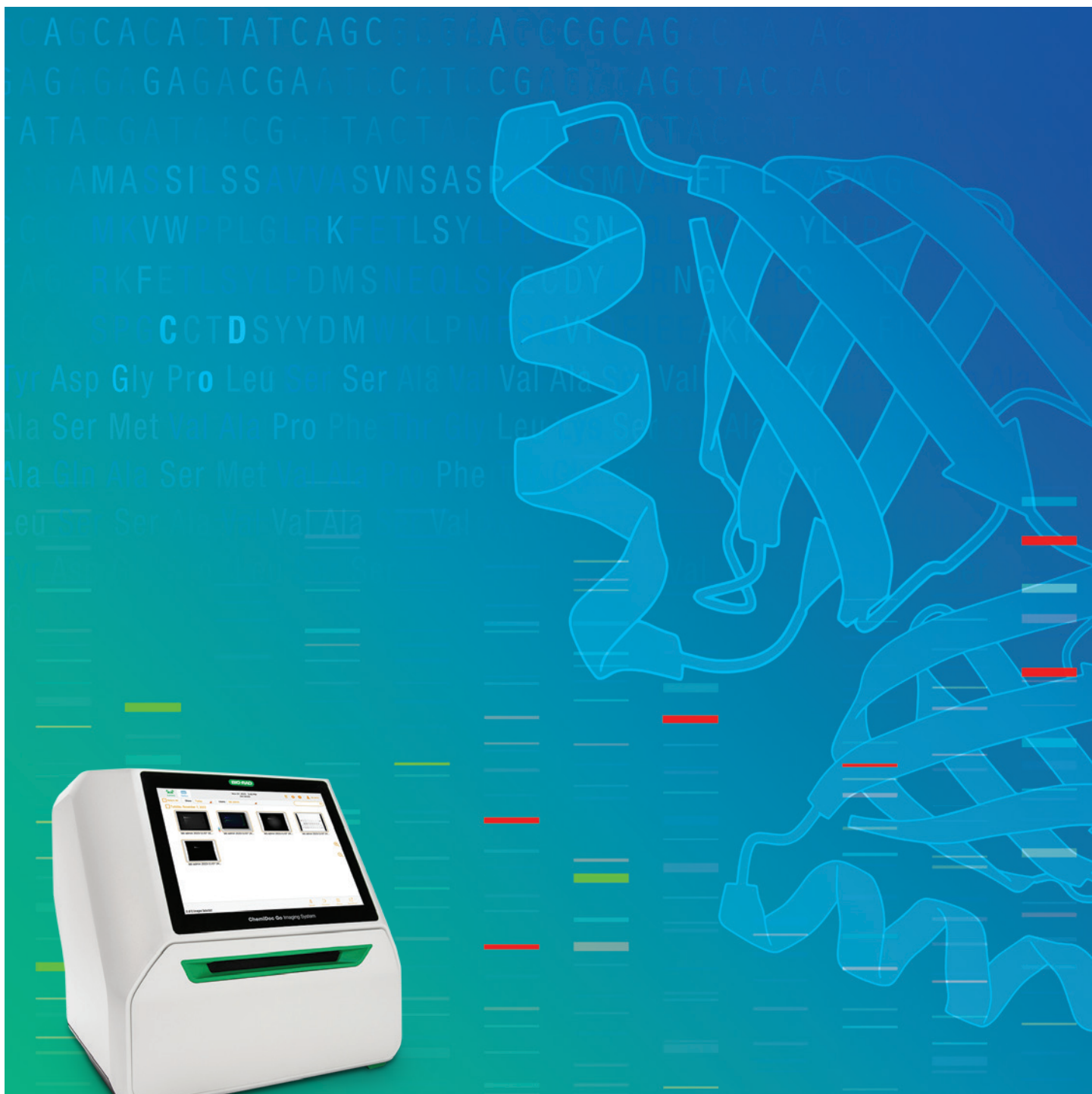


ChemiDoc™ Go Imaging System

Small Footprint, Big Results



Impressive Images. Space-Saving Size.

Advanced chemiluminescence and StarBright™ Blue fluorescence detection in a compact design. Go above and beyond — acquire, save, quantitate, report, and publish with ease.

Smart Tray Technology* automatically recognizes your application.



Blue Sample Tray (Optional)
GelGreen and SYBR® stains; band excision.



White Sample Tray (Optional)
Coomassie Blue, silver, and other stains.

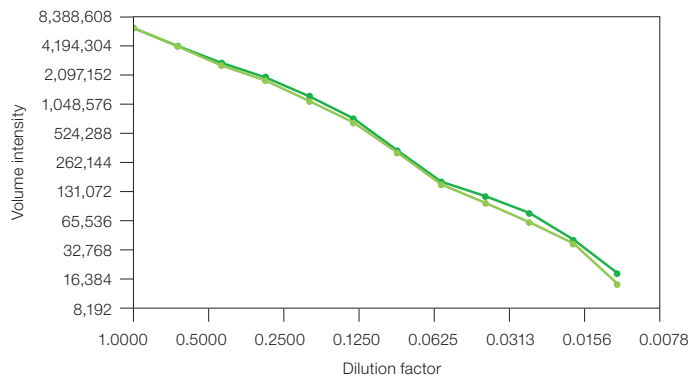
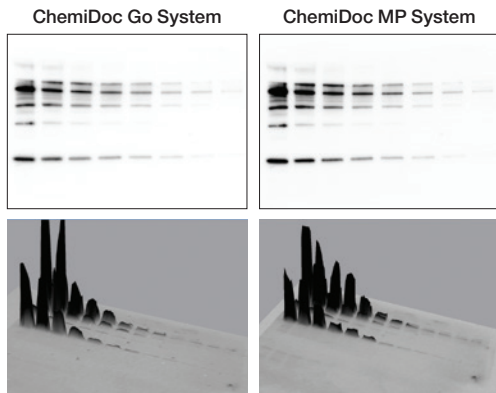


UV/Stain-Free Sample Tray (Included)
Chemiluminescent and fluorescent blots; Stain-Free gels and blots; ethidium bromide; SYPRO Ruby and other stains; band excision.



Scan the QR code and visualize the compact ChemiDoc Go Imaging System in your laboratory with our augmented reality (AR) benchtop app. (iPhone — worldwide; Android — U.S. only)

Precision Chemiluminescence and Blue-Fluorescence Imaging



Chemiluminescent image analysis of a serial dilution series acquired with the ChemiDoc Go (left) and ChemiDoc MP (right) Imaging Systems.

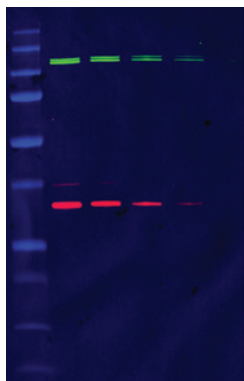
Plot of signal intensity from a single band in a dilution series detected with the ChemiDoc Go (●) or ChemiDoc MP (●) Imaging System.

Capture gel and western blot images from your benchtop with the same sensitivity as with larger, shared instruments.

With advanced complementary metal oxide semiconductor (CMOS) digital imaging and high-intensity light sources, the ChemiDoc Go Imaging System offers no compromises in sensitivity or dynamic range. Choose traditional chemiluminescence or colorimetric detection or go further using multiplex analysis with cost-effective StarBright Blue Fluorescent Secondary Antibodies. Normalize to total protein with Stain-Free gels in your western blot workflow and eliminate the need to detect housekeeping proteins.

The ChemiDoc Go Imaging System features high-intensity, all-LED illumination sources.

Transillumination	Epi-Illumination
UV LEDs: higher intensity at precise wavelengths	UV LEDs: specifically tuned for maximum Stain-Free blot signal
Blue LEDs: higher-intensity, precise-wavelength illumination for StarBright Blue 520 and 700 Antibodies, safe nucleic acid stains, and nucleic acid band excision	Green LEDs: higher-intensity, precise-wavelength illumination yields greater signal intensity than "white" LEDs for most stains
Amber LEDs: higher-intensity, precise-wavelength illumination yields greater signal intensity with Coomassie Blue and other visible stains	



Example image of a multiplex western blot using the Precision Plus Protein Dual Color Standards in the colorimetric channel (blue) with StarBright Blue 520 (green) and 700 (red) Fluorescent Secondary Antibodies imaged on the ChemiDoc Go Imaging System.

Versatile Platform



You are in control — Smart Tray Technology with light intensity adjustment.

The ChemiDoc Go System features a new toggle to adjust the blue light intensity when using the Blue Tray for band excision.

Compact size with a large imaging area.

The ChemiDoc Go Imaging System is compatible with large-format gels and blots and up to four mini-gels or blots at once.

Safe gel excision — no matter your stain.

Perform gel excision directly on the instrument. The optional UV shield protects the user when working with traditional DNA stains.

Use the optional Blue Tray for easy direct excision when working with safe stains.



Supported Detection Methods

Protein Gels

- Stain-Free gels
- Oriole Fluorescent Gel Stain
- Silver stains
- Coomassie Blue
- Coomassie Fluor Orange
- SYPRO Ruby
- Flamingo Fluorescent Gel Stain

Nucleic Acid Gels

- Ethidium bromide
- SYBR® Green
- SYBR® Safe
- SYBR® Gold
- GelRed
- GelGreen
- Fast Blast DNA Stain
- UVView Loading Dye and Stain

Protein Blots

- Stain-Free blots
- Chemiluminescent blots
- StarBright Blue 520
- StarBright Blue 700
- Colorimetric blots
- SYPRO Ruby
- Ponceau S
- Negative stains

Visit bio-rad.com/GelExcision for a free Gel Excision Kit.

Designed to Perform



Three-Step Touch Workflow

Using Image Lab Touch Software, choose the optimized preset for your application, select **Acquire**, and save the image in your choice of multiple file formats. Save to your institution's network, a USB drive, or your BR.io cloud account, and even print to a dedicated printer. Analyze your data anywhere with Image Lab Software for Mac or PC. Maintain electronic records for U.S. FDA 21 CFR Part 11 compliance with Image Lab Software, Security Edition for PC.



Advanced CMOS Sensor Technology

After years of development, CMOS sensor technology now meets the demanding requirements of life science imaging, delivering higher efficiency and greater pixel density than charge-coupled device (CCD) detection. The new high-sensitivity CMOS sensors of the ChemiDoc Go Imaging System also require less cooling and power, enhancing reliability.



All-LED Illumination

New in the ChemiDoc Go System are all-LED light sources for trans- and epi-illumination. Multiple light sources provide precise illumination for each application, and all-LED lights eliminate the need for bulb replacements.



Secure Cloud Storage

The first Bio-Rad imager connected to the BR.io cloud platform, the ChemiDoc Go System simplifies data storage, sharing, and analysis when images are uploaded to your secure folders in the cloud. Visit [BR.io](https://br.io) for more information on the powerful capabilities of the BR.io cloud platform.



StarBright Compatibility

The ChemiDoc Go System now supports imaging using StarBright Blue 520 and 700 Fluorescent Secondary Antibodies.



Complete Stain-Free Western Blotting Solution

Using Stain-Free technology in your western blot workflow can help you achieve accurate results in less time.

With Stain-Free imaging, you can assess the quality of sample separation after electrophoresis and the efficiency of protein transfer and then normalize your data to total protein — all without staining, destaining, or probing for housekeeping proteins. Streamline your day with a ChemiDoc Go Imaging System on your bench.

Visit bio-rad.com/StainFree to learn more about Bio-Rad's Stain-Free Western Blotting Workflow.



Consider Fluorescent Western Blotting

Fluorescently labeled secondary antibodies and advanced digital imaging are a powerful combination for western blot detection and quantitation.

The ChemiDoc Go Imaging System allows fluorescence detection in two colors using StarBright Blue 520 and 700 Fluorescent Secondary Antibodies. Fluorescence detection with StarBright Blue Dye is compatible with total protein normalization using Stain-Free technology, eliminating the need for a channel to detect housekeeping proteins.

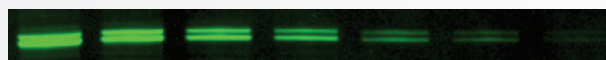
Why StarBright Fluorescent Secondary Antibodies

StarBright Blue fluorescent nanoparticles provide a considerably brighter signal than conventional dyes and match the most sensitive chemiluminescent substrates. These fluorescent nanoparticles are conjugated to highly cross-absorbed goat anti-mouse (GAM) or goat anti-rabbit (GAR) IgG and are easily adapted to your current protocol. Eliminate the need for detection substrates and take advantage of low background and a photostable signal when using StarBright Blue Secondary Antibodies.

StarBright Blue 700
Blue-excited fluorescence
20 sec



StarBright Blue 520
Blue-excited fluorescence
20 sec



Visit [bio-rad.com/FluorescentWestern](https://www.bio-rad.com/FluorescentWestern) for more information on how to begin western blotting with fluorescent secondary antibodies.

Why Multiplex Blotting

Multiplex blotting allows for the simultaneous detection and quantitation of multiple proteins on a single blot. In addition to saving time, the many advantages of multiplex detection include:

- No stripping, reprobing, or cutting the membrane
- Conserving precious sample
- Generating more information from each blot
- Visualizing modified and unmodified targets with posttranslational modifications at one time
- Quantitating proteins close in molecular weight with accuracy

Specifications

Automation Capabilities

Smart Tray Technology	The ChemiDoc Go Imaging System automatically recognizes your application-specific tray and adjusts imaging parameters and software options accordingly
Auto-focus	Precalibrated focus for any zoom setting
Auto-exposure	Two auto-exposure algorithms (rapid or optimal)
Image flat fielding	Dynamic; precalibrated and optimized for every application

Hardware Specifications

Touch-screen functionality	Multitouch capable Display resolution 1,024 x 768 pixels 9.7" (24.64 cm) display
Maximum image area (W x H)	21 x 14 cm
Detector	20.48 MP back-side illuminated (BSI) CMOS
Quantum efficiency	75% at 425 nm
Bit depth	65,535
Dynamic range	>4 orders of magnitude
LED excitation sources	Trans-UV Trans-blue Trans-amber Epi-UV Epi-green
Emission filters	520/260 BP, 590/110 BP, 695 LP
Data output	Image Lab SCN, MSCN, SSCN, TIFF (16-bit or 8-bit), and JPEG
Instrument weight	21.3 kg (46.9 lbs)
Instrument size (W x D x H)	36 x 48 x 36 cm
Operating voltage	100–240 VAC, 50–60 Hz
Operating temperature	10–28°C
Operating humidity	20–80% relative humidity (noncondensing)

Ordering Information

Catalog # Description

Imaging System

12018025	ChemiDoc Go Imaging System , a blot and gel imaging system capable of imaging chemiluminescent, StarBright Blue 520 and 700 fluorescent and colorimetric western blots, all common nucleic acid and protein gel stains, and Stain-Free gels and blots. Includes internal computer, 9.7" touch-screen display, camera, Image Lab Touch Software, and UV/Stain-Free sample tray. White Tray, Blue Tray, and additional accessories are sold separately
----------	---

ChemiDoc Go Imaging Trays

12019873	White Tray for ChemiDoc Go Imaging System
12019748	Blue Tray for ChemiDoc Go Imaging System
12012189	UV/Stain-Free Tray for ChemiDoc Go and GelDoc™ Go Imaging Systems

Analysis Software

12012931	Image Lab Software on USB drive
17006130	Image Lab Software, Security Edition, 1 license
17006171	Image Lab Software, Security Edition, 5 licenses
17006172	Image Lab Software, Security Edition, 10 licenses

Optional Accessories

12012164	UV Shield for ChemiDoc Go and GelDoc Go Imaging Systems
1708377	Holder for Sample Trays and UV Shield
1708185	XcitaBlue Viewing Goggles
12012190	ChemiDoc Go and GelDoc Go Alignment Template Kit
12019757	ChemiDoc Go Imaging System IQ/OQ Kit
1703760	Gel Cutter
12018650	ChemiDoc Go Imaging System WiFi Adapter, US Only
12018509	ChemiDoc Go Imaging System WiFi Adapter, Global

Visit bio-rad.com/ChemiDocGo for more information.

BIO-RAD, CHEMIDOC, GELDOC, and STARBRIGHT are trademarks of Bio-Rad Laboratories, Inc., in certain jurisdictions. SYBR is a trademark of Thermo Fisher Scientific Inc. All trademarks used herein are the property of their respective owner. © 2024 Bio-Rad Laboratories, Inc.

Image Lab Touch software is based in part on the work of the Cimg project (<http://cimg.eu/>). See license for details at www.cecill.info/licences/Licence_CeCILL-C_V1-en.html.

Image Lab Touch is based in part on libraries from GCC runtime and the Gnu C library.

BIO-RAD

**Bio-Rad
Laboratories, Inc.**

Life Science
Group

Website bio-rad.com USA 1 800 424 6723 Australia 61 2 9914 2800 Austria 00 800 00 24 67 23 Belgium 00 800 00 24 67 23 Brazil 4003 0399
Canada 1 905 364 3435 China 86 21 6169 8500 Czech Republic 00 800 00 24 67 23 Denmark 00 800 00 24 67 23 Finland 00 800 00 24 67 23
France 00 800 00 24 67 23 Germany 00 800 00 24 67 23 Hong Kong 852 2789 3300 Hungary 00 800 00 24 67 23 India 91 124 4029300 Israel 0 3 9636050
Italy 00 800 00 24 67 23 Japan 81 3 6361 7000 Korea 82 080 007 7373 Luxembourg 00 800 00 24 67 23 Mexico 52 555 488 7670
The Netherlands 00 800 00 24 67 23 New Zealand 64 9 415 2280 Norway 00 800 00 24 67 23 Poland 00 800 00 24 67 23 Portugal 00 800 00 24 67 23
Russian Federation 00 800 00 24 67 23 Singapore 65 6415 3188 South Africa 00 800 00 24 67 23 Spain 00 800 00 24 67 23 Sweden 00 800 00 24 67 23
Switzerland 00 800 00 24 67 23 Taiwan 886 2 2578 7189 Thailand 66 2 651 8311 United Arab Emirates 36 1 459 6150 United Kingdom 00 800 00 24 67 23

